

FOFESD 98022860

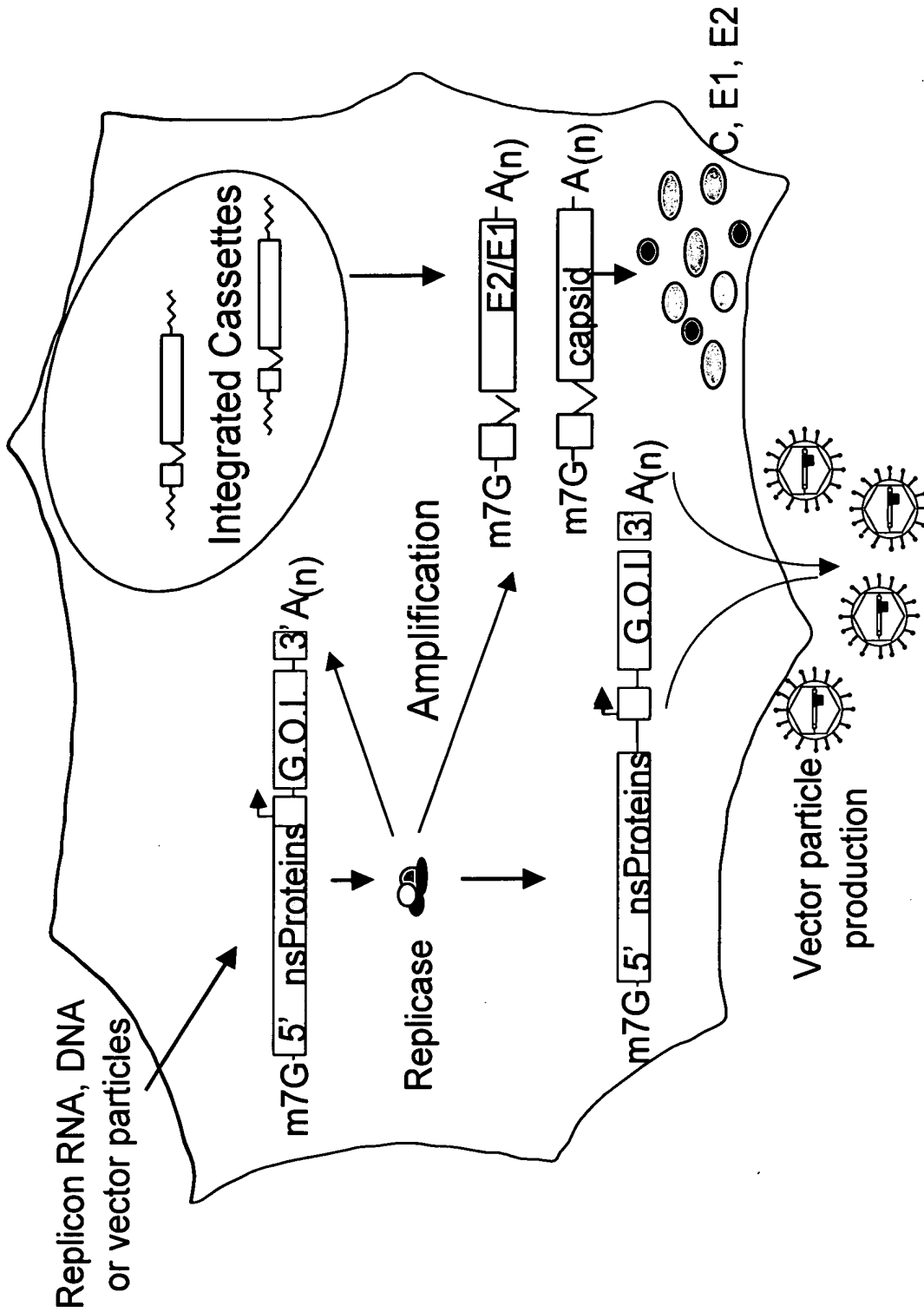


Figure 1

APPROVED	O.G. FIG.	
BY	CLASS	SUBCLASS
DRAFTSMAN		

2/12

FOFES0" 9802/860

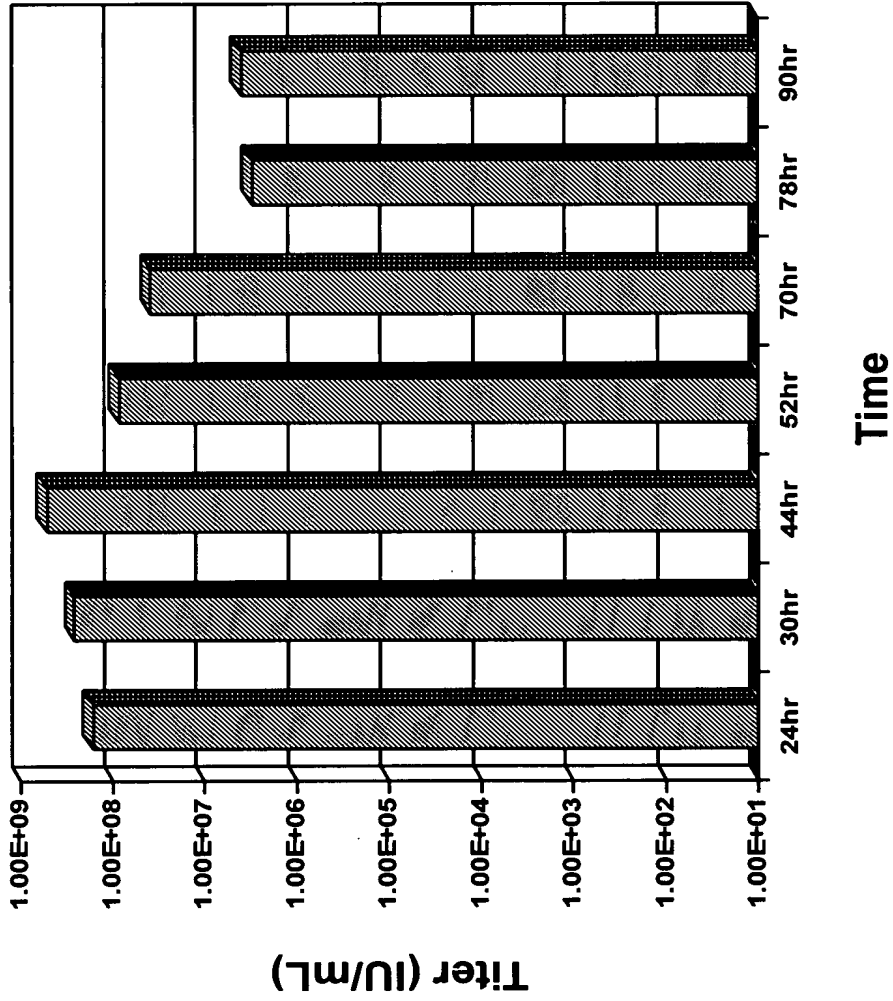
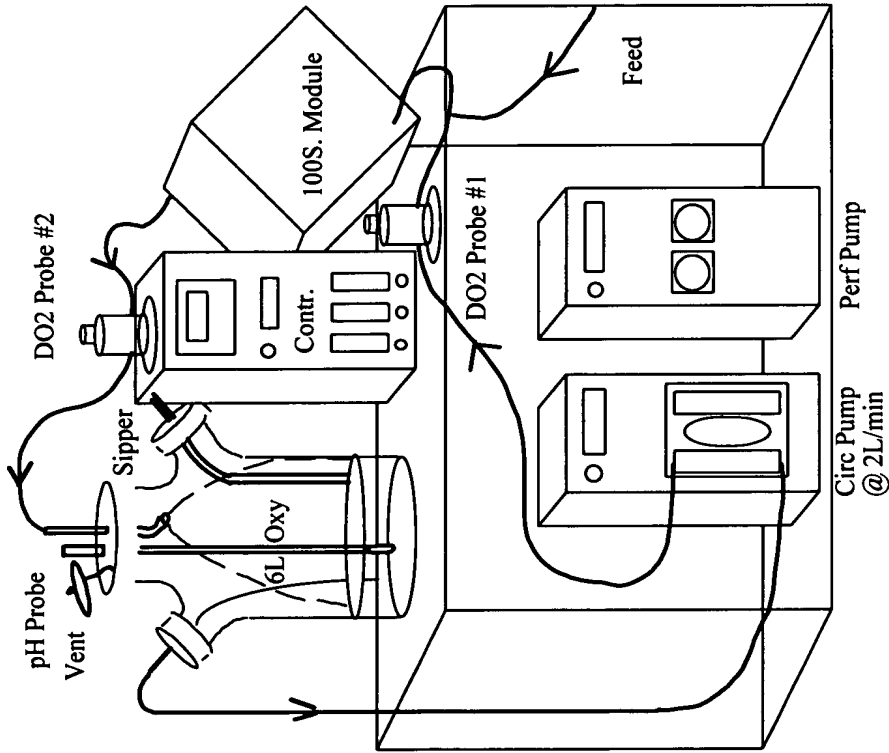


Figure 2

FOFESD" 98022860

APPROVED	O.G. FIG.
BY	CLASS
DRAFTSMAN	SUBCLASS

3/12



- 6L Thin-film Oxygenator, 2 ft<sup>2</sup>
- DO<sub>2</sub> Probes: Pre & Post Module
- Circulation, 2.0 L/min
- 1/4" ID Ports
- Single 100S Module (85K cm<sup>2</sup>)

Figure 3

APPROVED	O.G. FIG.	
BY	CLASS	SUBCLASS
DRAFTSMAN		

4/12

FOFES0\* 9802/860

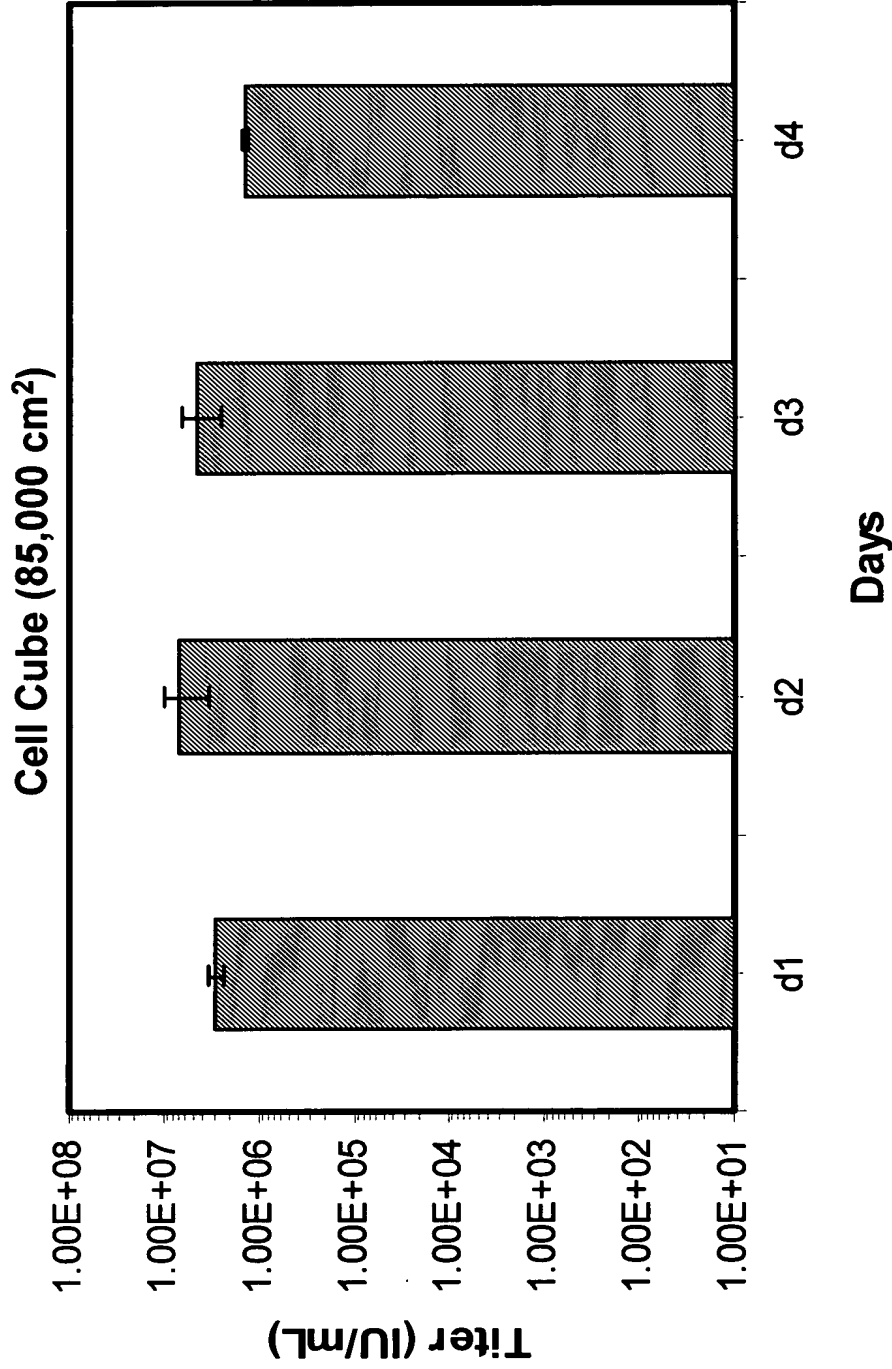


Figure 4

APPROVED	O.G. FIG.
BY	CLASS/SUBCLASS
DRAFTSMAN	

5/12

FOFESD\* 9802/860



**Fractions**  
**Figure 5**

FOFESD" S802L860

APPROVED	O. G. FIG.
BY	CLASS/SUBCLASS
DRAFTSMAN	

6/12

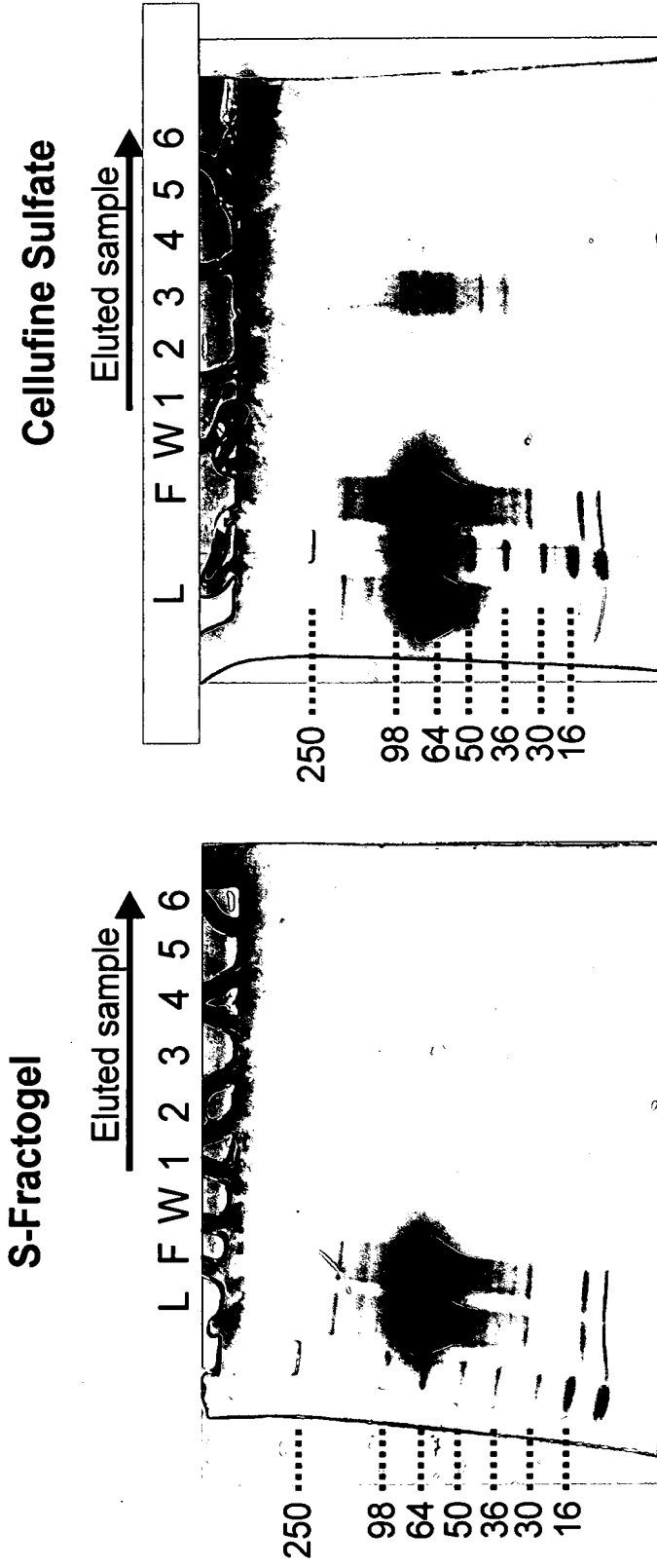


Figure 6

APPROVED	O.G. FIG.	
BY	CLASS	SUBCLASS
DRAFTSMAN		

7/12

FOF50" 98024860

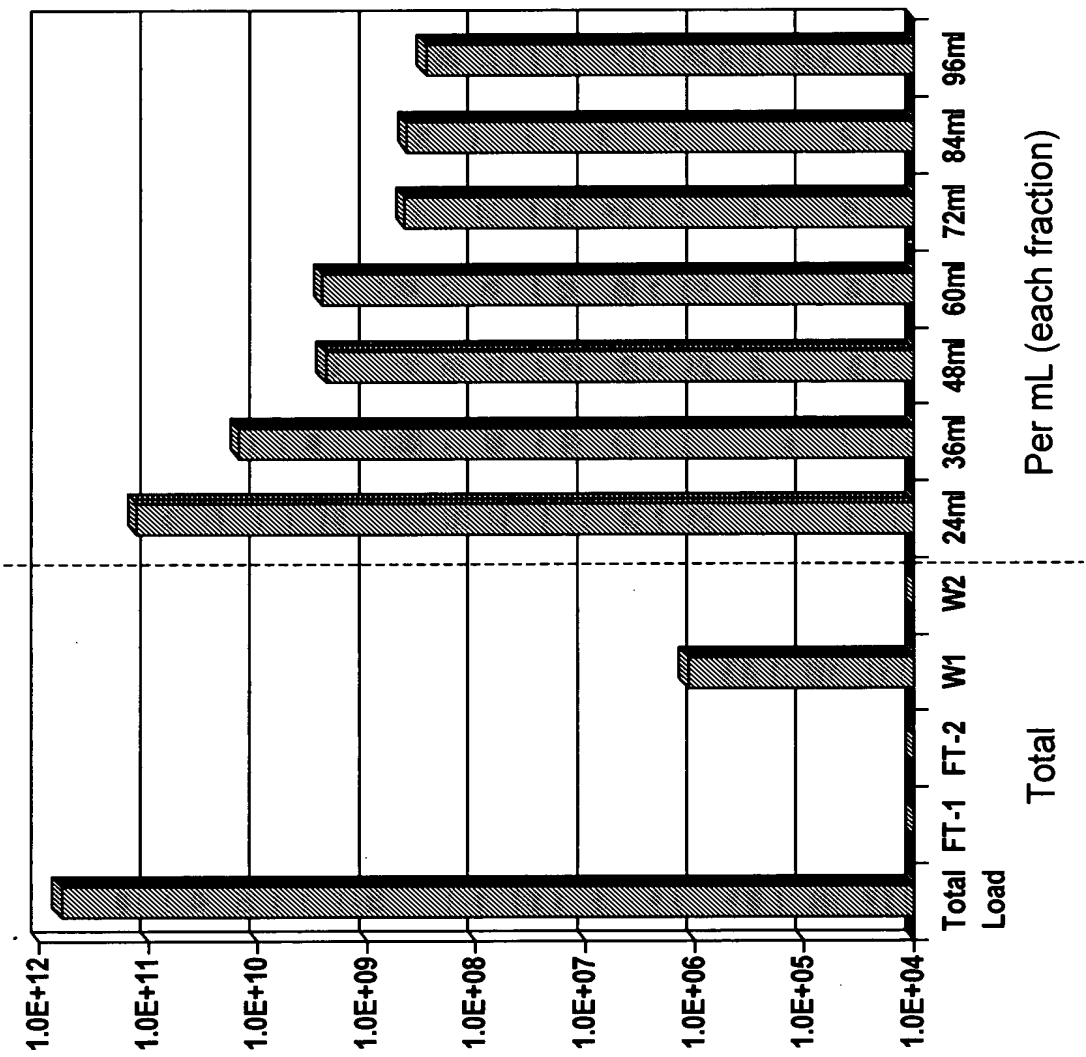


Figure 7

APPROVED	O.G. FIG.	
BY	CLASS	SUBCLASS
DRAFTSMAN		

8/12

FOFES0" 9802/8150

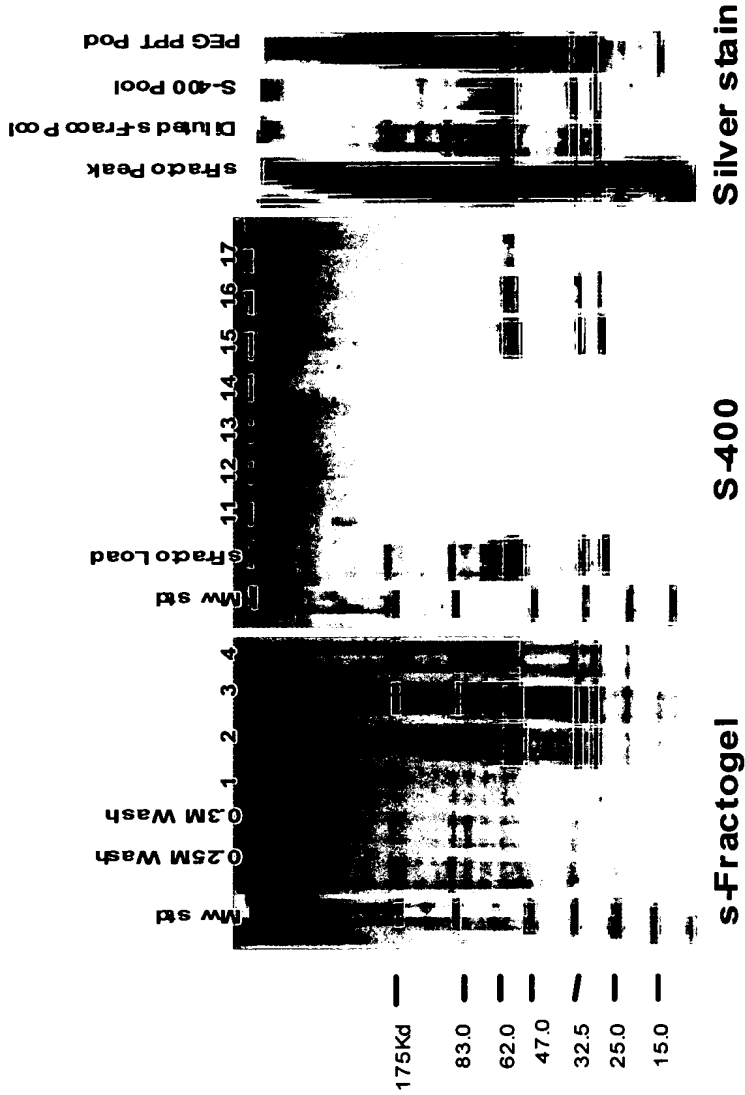


Figure 8



FOFES0" 98024850

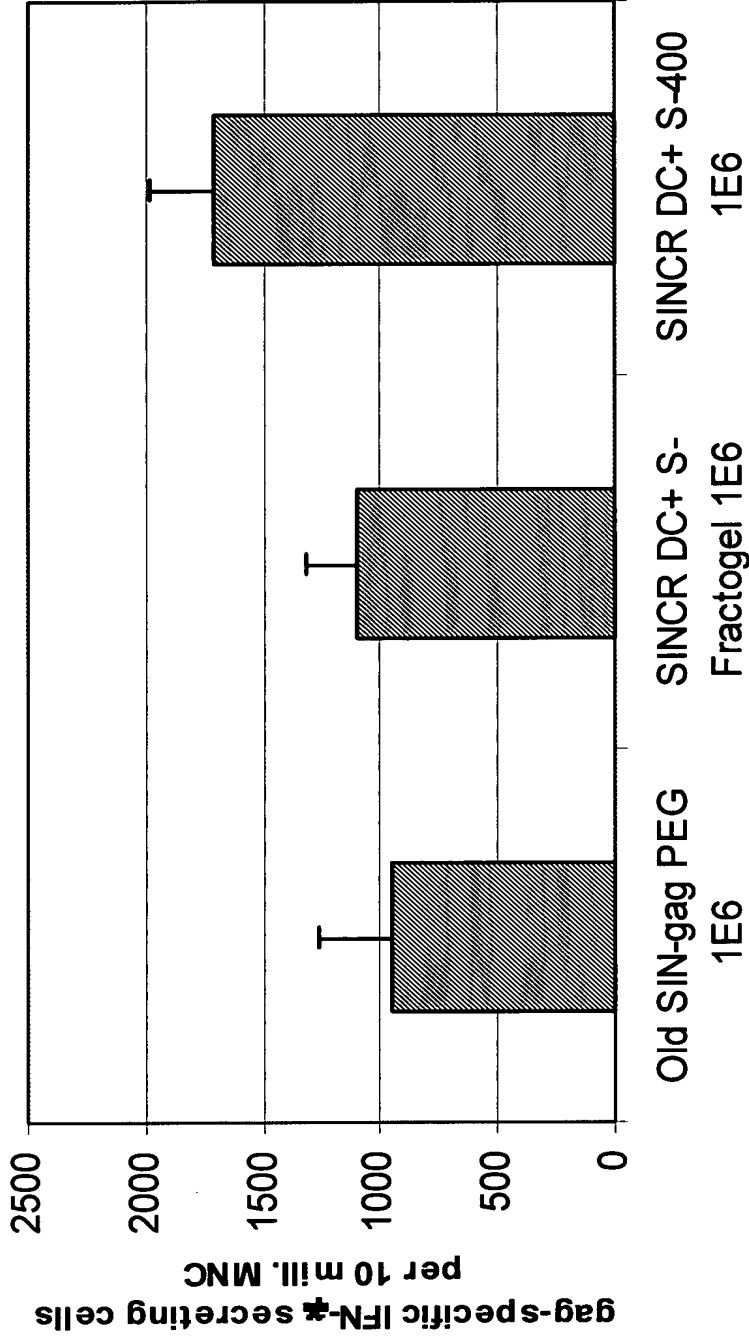


Figure 9

10/12

FOFESQ" 9802/860

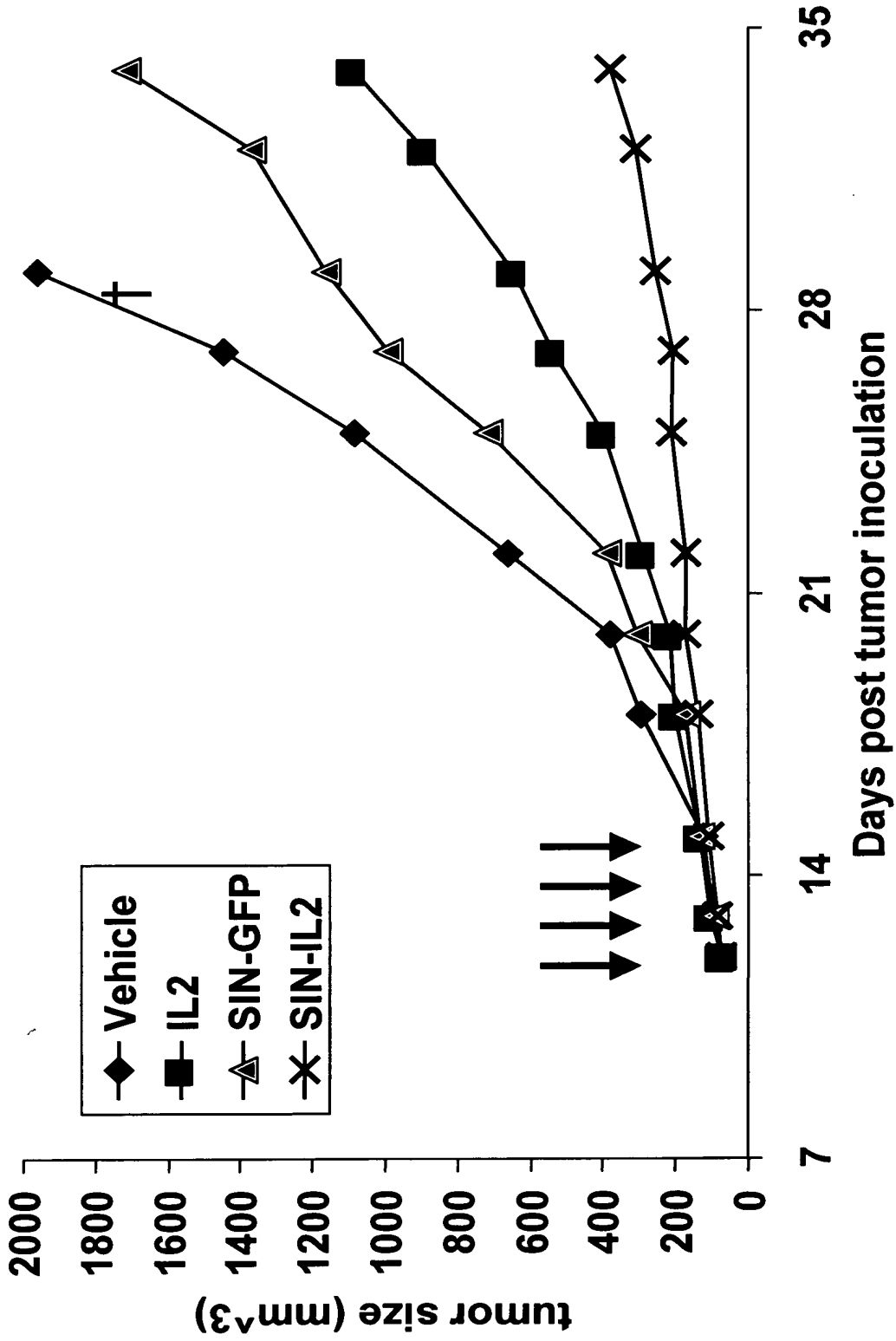


Figure 10

APPROVED	O. G. FIG.	
BY	CLASS	SUBCLASS
DRAFTSMAN		

11/12

FOR 50° 9802/860

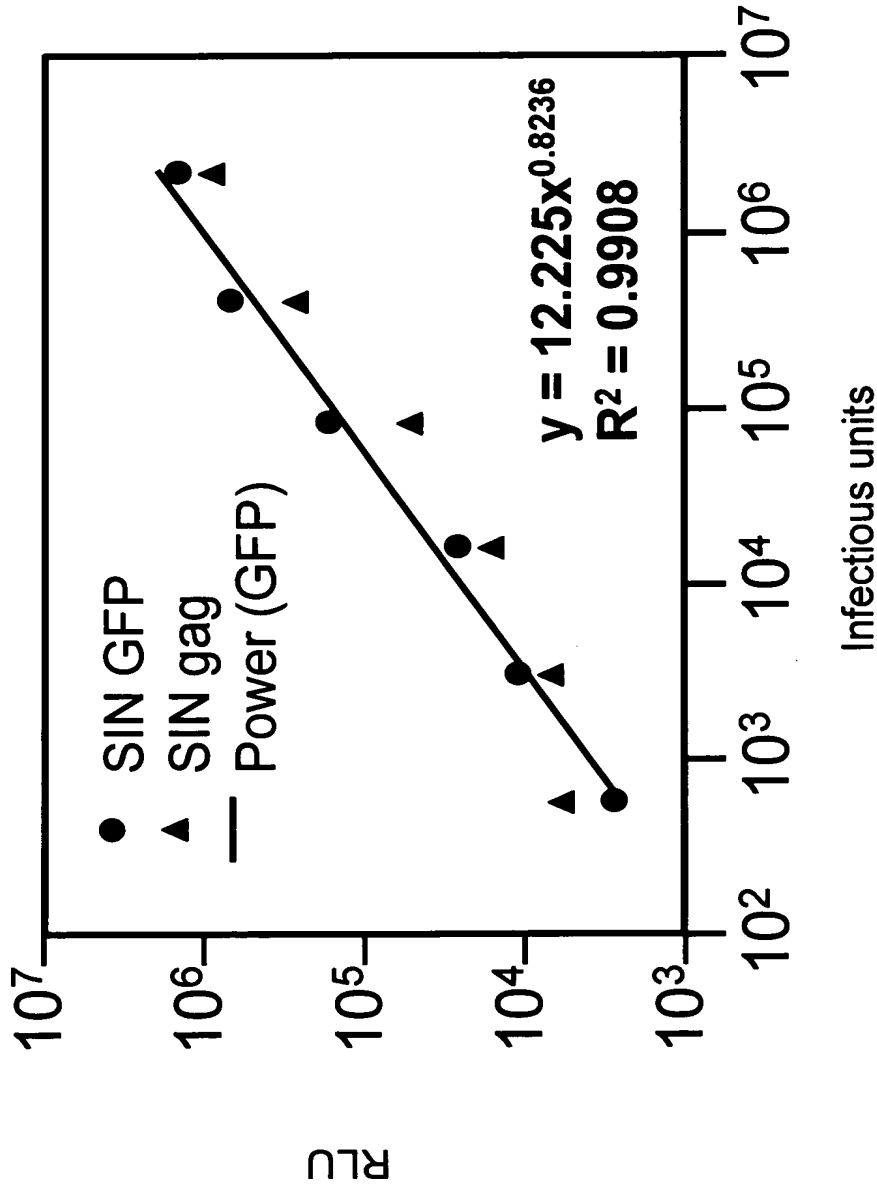
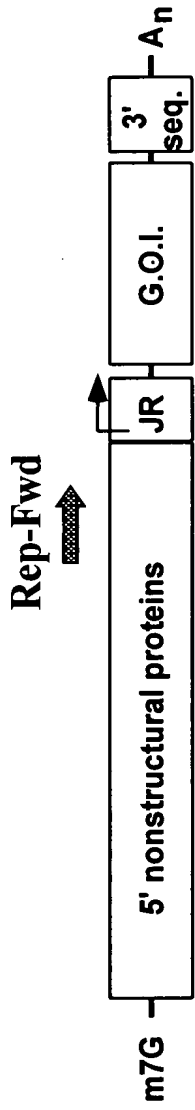
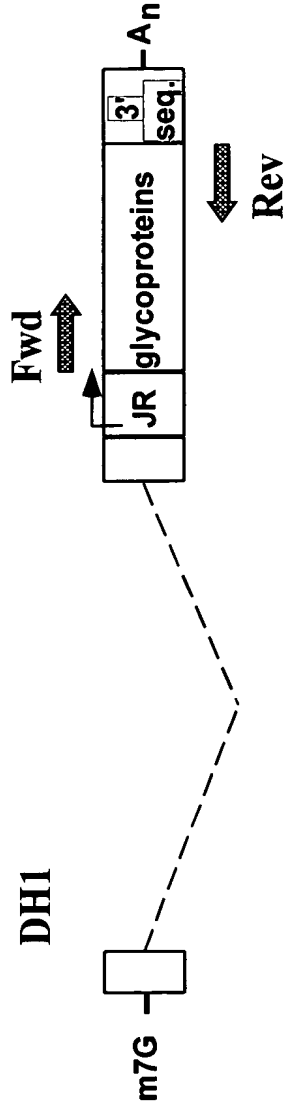


Figure 11

FOFESD 98022860

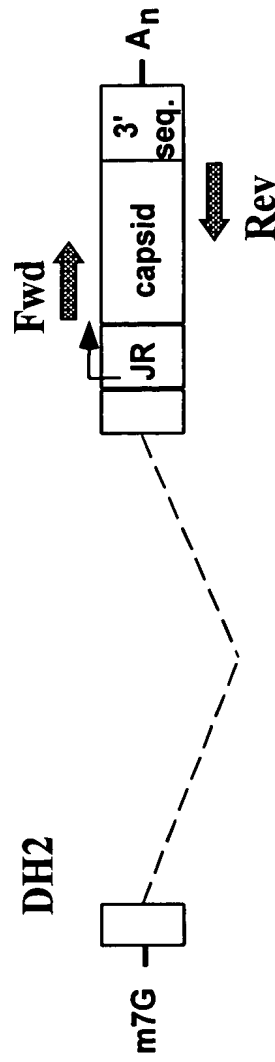


Replicon Vector



DH1

Defective Helpers  
or  
Structural protein  
expression cassettes



DH2

Figure 12